



## **Molecular Imaging Products Company**

A Division of Summit Anesthesia Support  
Anesthesia Technologies

### POSI-SEAL HINGED INDUCTION CHAMBER

#### **OPERATION INSTRUCTIONS**

**Mouse** - AS-01-0532

Dimensions: 4.0" H x 9.75" W x 7.75" F/B

Volume: 4.9 Liters

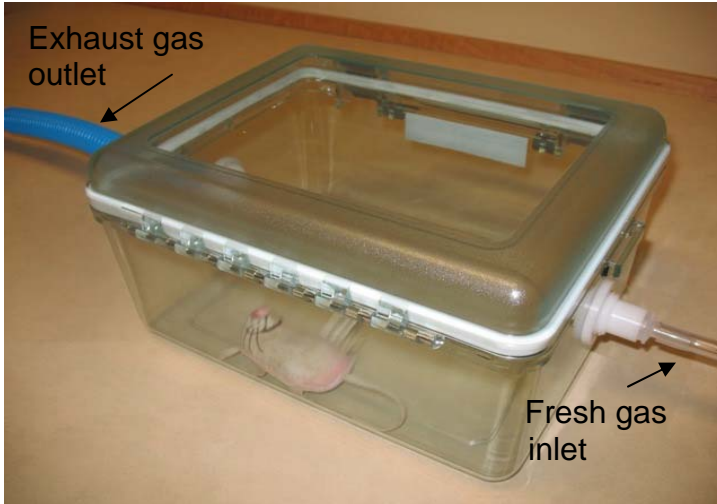
**Rat** - AS-01-0531 – RAT

5.5" H x 10.5" W x 9.5" F/B

9.1 Liters

1. Place the chamber on a flat surface with the opening away from the operator, so that the sliding top slides toward the operator. (see figure 1)
2. When the animal is fully anesthetized turn the Isoflurane off, and allow about five seconds for oxygen flow to help reduce Isoflurane concentrations in the chamber. (see figure 1)
3. Lift the chamber at the end closest to the operator and gently slide the animal down to the far side. (see figure 2)
4. Placing your hand over the far end of the chamber slide the top back just for enough to insert your hand and lift the animal out. Then immediately close the top. (see figure 3)
5. By keeping the opening as far away from the operator as is reasonably possible, and reducing the time that the chamber is open as much as possible, the risk of exposure to the operator will be reduced.

## POSI SEAL RODENT HINGED INDUCTION CHAMBER PICTURES



**Figure 1**

Position induction chamber so hinge is towards operator



**Figure 2**

When the subject is recumbent, slightly lift chamber at hinged end and roll the subject to the front of the chamber



**Figure 3**

Open chamber, remove subject, and close lid as quickly as possible