



Molecular Imaging Products Company
A Division of Summit Anesthesia Support
Anesthesia Technologies

SLIDING TOP INDUCTION CHAMBER

OPERATION INSTRUCTIONS

Mouse - AS-01-0530-SM

Dimensions: 4.625" H x 4.25" W x 9.25" F/B

Volume: 3.0 Liters

Rat - AS-01-0530 – LG

5.25" W x 5.375" H x 11.25" F/B

5.4 Liters

1. Place the chamber on a flat surface with the opening away from the operator, so that the sliding top slides toward the operator. (see figure 1)
2. When the animal is fully anesthetized turn the Isoflurane off, and allow about five seconds for oxygen flow to help reduce Isoflurane concentrations in the chamber. (see figure 1)
3. Lift the chamber at the end closest to the operator and gently slide the animal down to the far side. (see figure 2)
4. Placing your hand over the far end of the chamber slide the top back just for enough to insert your hand and lift the animal out. Then immediately close the top. (see figure 3)
5. By keeping the opening as far away from the operator as is reasonably possible, and reducing the time that the chamber is open as much as possible, the risk of exposure to the operator will be reduced.

SLIDE TOP RODENT INDUCTION CHAMBER

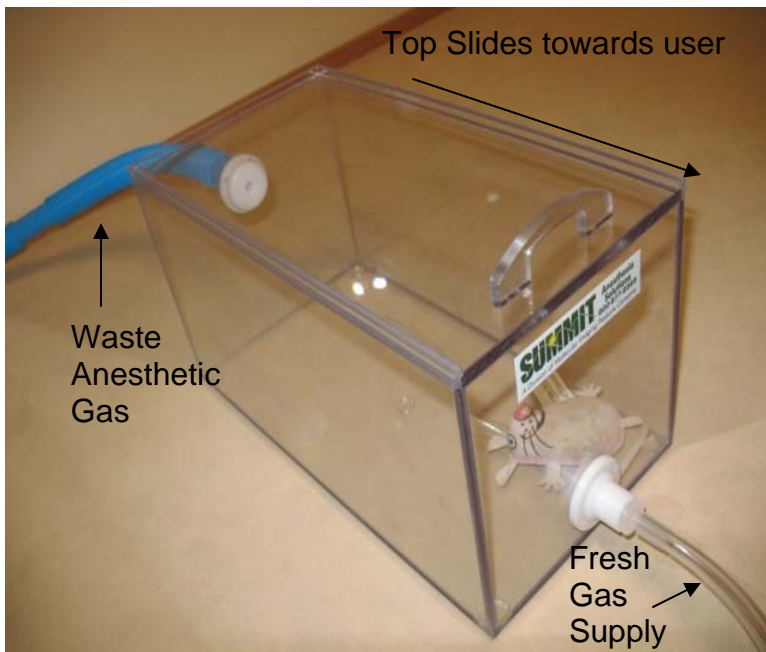


Figure 1

Position Sliding Top Induction Chamber so that the long side is perpendicular to the operator. The opening is at the rear of the Induction Chamber.

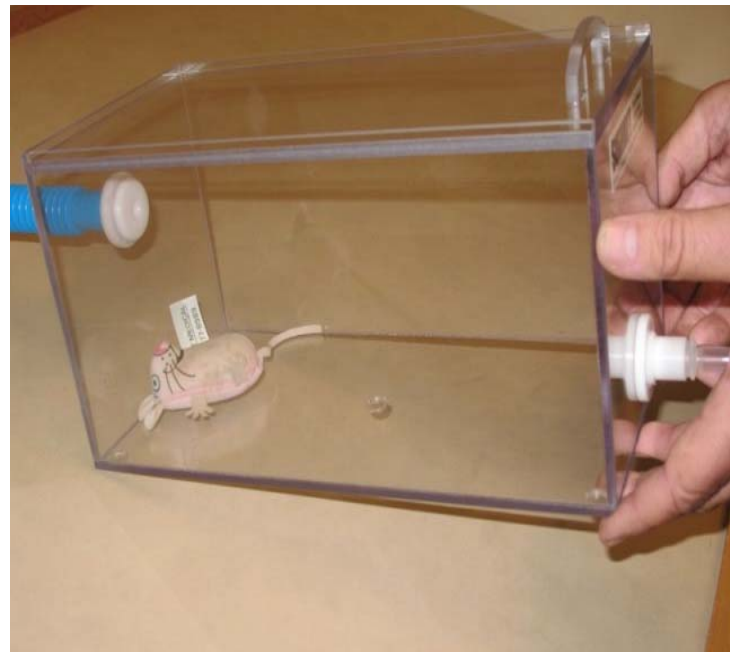


Figure 2

When the subject is recumbent, slightly lift front of chamber and roll subject to rear of chamber.



Figure 3

Slide open top of chamber just enough to remove subject then close.